

DIXIE GRINDERS INC.

1324 RAILROAD AVE., GUNTERSVILLE, AL 35976
(800) 745-0586 OR (256) 582-0477
FAX: (256) 582-0478

MODEL 11-9 MEAT GRINDER (MINCER)

11 in. (279.4 mm) Dia. Plate, 9 in. (228.6 mm) Dia. Feedscrew

PRODUCTION RATES

Pre-Grinding 18,000 - 72,000 Pounds Per Hour
Final-Grinding 12,000 - 36,000 Pounds Per Hour

Production rates depend on a variety of factors, including the type of product being ground, the product's temperature and particle size, the speed of the grinder, the hole size of the plate, and the plate configuration.

APPLICATIONS

Fresh, tempered, and frozen poultry, pork, beef, and fish.
Animal by-products, including bones, skins, and hides.



CONSTRUCTION MATERIALS AND FEATURES

PART

Basic Grinder Parts	Tin Plated Steel
Gearbox Model	4.84B (High Speed) or 7.54B (Low Speed)
Gearbox Construction	Cast Steel Housing, Falk Class 10 Gears
Gearbox Finish	Gray Epoxy Paint, with Clear Coat
Hopper	3-Bolt Gearbox Flange (B Drive), B/D Length
Head	16 Spiral Flutes, B Length
Ring	Single-Bridged
Feedscrew	Design Depends on Application, B Length
Feedscrew Pin Hole	Uses 10010 Centering Pin
Knife Holder	4 Bladed, Stainless Steel Alloy
Springs	Disc Springs
Plate	Premium Tool Steel Orifice Plate
Plate Configuration	Single Plate
Frame	Undermount, Stainless Steel
Hopper Guard	Standard Hopper Guard, Stainless Steel
Plate Guard	Standard Plate Guard, Stainless Steel
Drive System	Browning Pulleys and Gates Belts
Drive Motor Type	Baldor Motor, TEFC, 1800 RPM, 230/460V
Drive Motor HP	75 Horsepower
Bone Collector	None
Controls	None

STANDARD

OPTIONAL

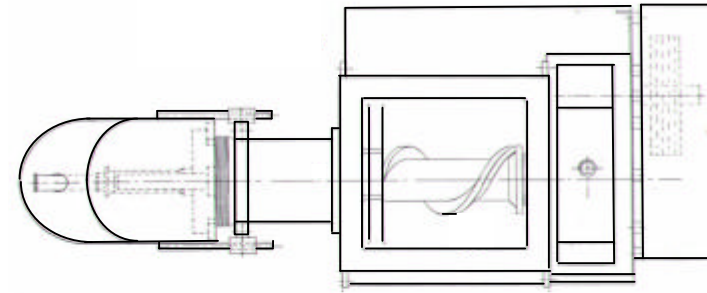
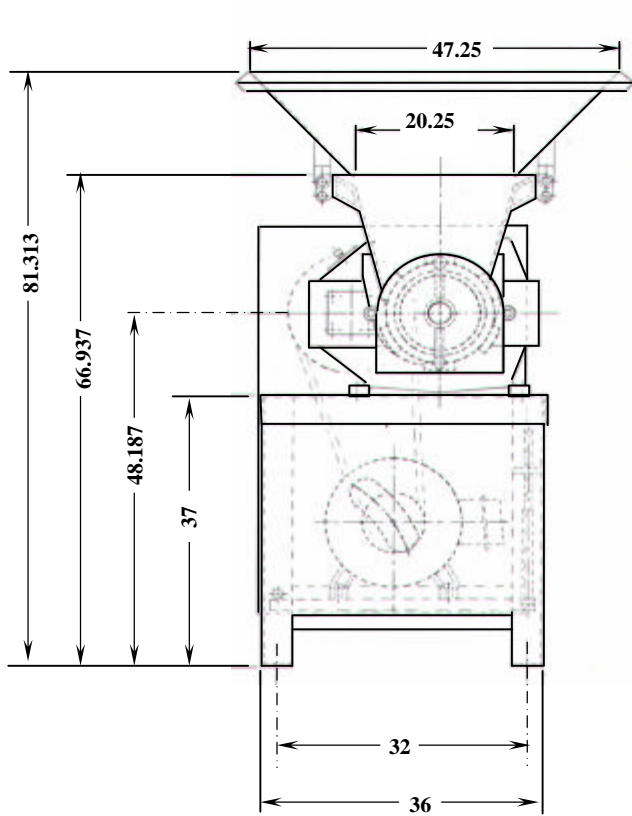
Stainless Steel
4.84A (High Speed) or 7.54A (Low Speed)
None
None
8-Bolt Gearbox Flange (A Drive), B-Long Length
12 or 16 Straight Flutes, B or D Length
Non-Bridged, Cross-Bridged
B-Long or D Length
Uses 1981, 1982, or 2935 Centering Pin
2 or 3 Bladed, Stainless Steel Alloy
Coil Spring
None
Double and Triple Plate Assemblies
Sidemount, Stainless Steel
Special Hopper Guards and Extensions
Special Plate Guards and Transition Funnels
None
Other T Frame Motors, or Customer Provided
40, 50, 60, or 100 Horsepower
BCA-2 Bone Collection Assembly, Manual or Automatic
None

DIXIE GRINDERS INC.

MODEL 11-9 MEAT GRINDER (MINCER) BASIC DIMENSIONS

These dimensions are for a typical Model 11-9B Grinder.
The grinder shown is a Single Plate type with the BCA-2 Bone
Collection Assembly and a standard BCA Plate Guard.

The grinder is mounted on an Undermount Frame.
Units with different options will have different dimensions.
All dimensions are in inches.



Hopper Guard not shown on above view.

